

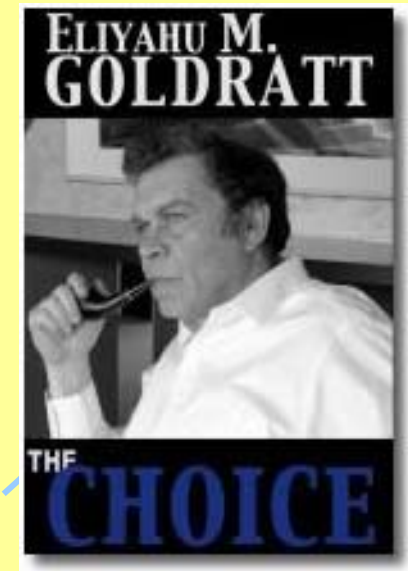


Homework Assignment EM 526 Constraints Management

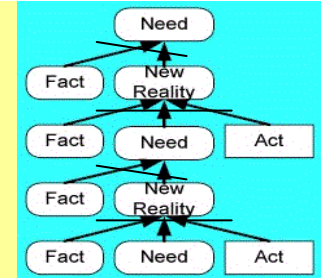
Class Helps Tree: The Choice – Thinking Clearly

Your Interpreting Text as a Logic Tree:
A Contribution to the Class.

Petr Zitnik

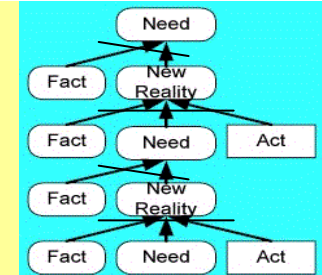
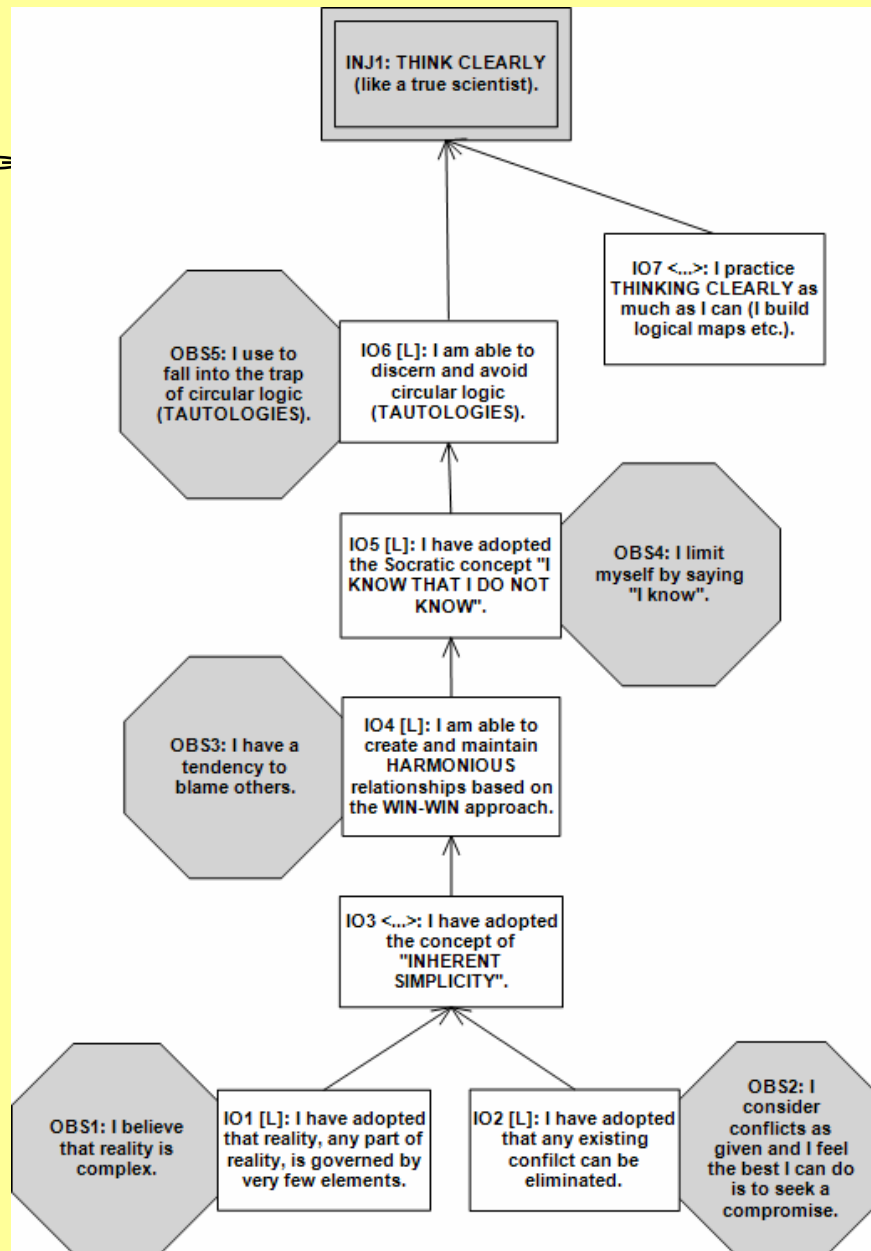


Introduction



- The Choice is about how to live a **FULL, MEANINGFUL LIFE**.
- The most important injection for reaching full life is **THINKING CLEARLY**.
- In The Choice, Eli Goldratt explains what obstacles prevent us from thinking clearly and shows how to overcome them.
- The Logic Trees in this presentation:
 - PreRequisite Tree – Obstacles to Thinking Clearly and Intermediate Objectives that overcome the Obstacles
 - Transition Tree (in five parts) – How to reach all the IOs stated in the PRT
- In the Transition Tree, some actions entities show how to use what we have learned in the EM 526 for Thinking Clearly and reaching Full Life.

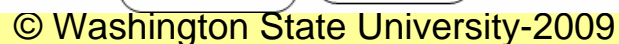
THINKING CLEARLY – PreRequisite Tree



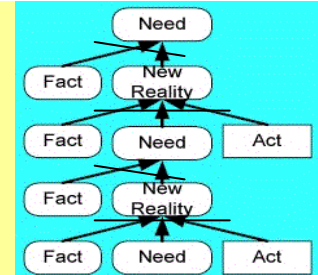
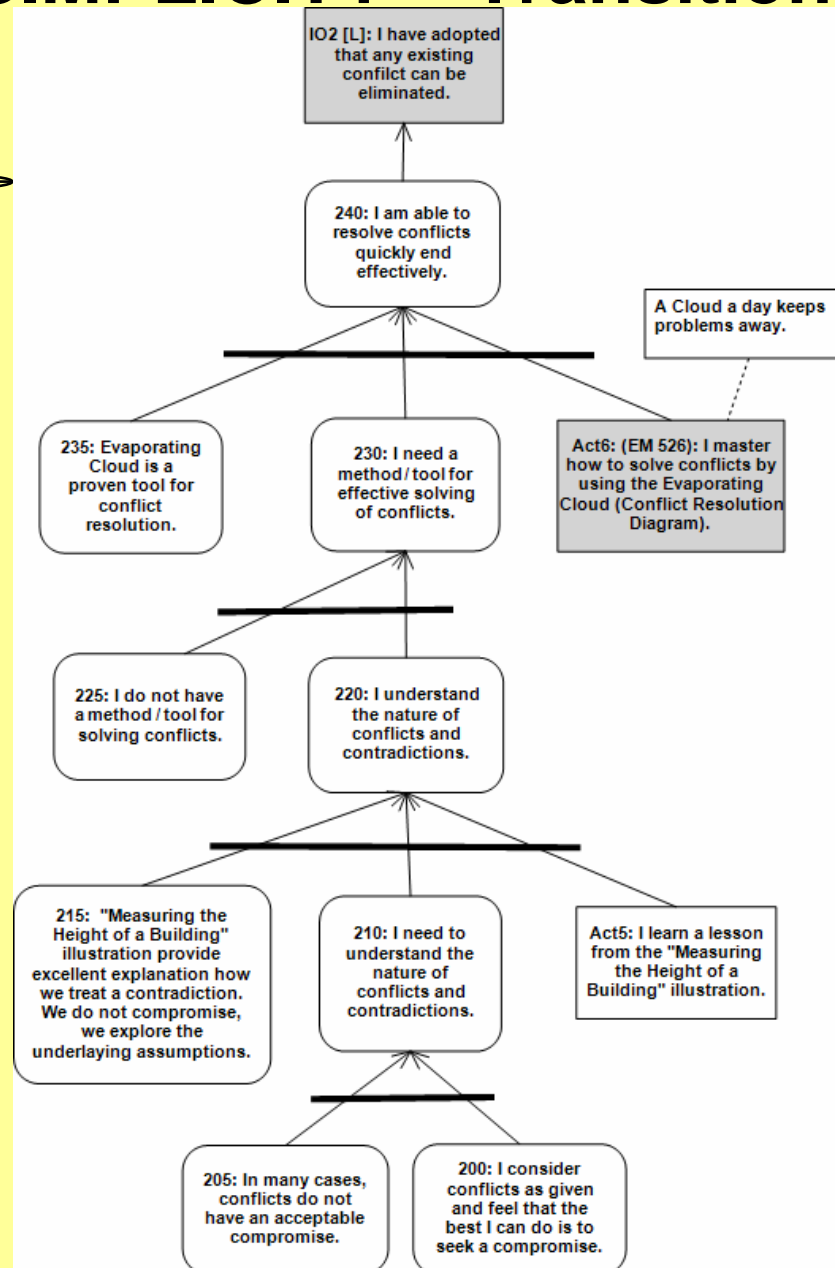
The diagram illustrates a process of creating a new reality through a feedback loop. It consists of three main stages, each represented by a central box labeled 'New Reality'. Each stage is influenced by 'Fact' and 'Need' inputs, and it produces an 'Act' output. The 'Act' output of one stage becomes a 'Fact' input for the next stage. The process starts with a 'Need' at the top, which leads to the first 'New Reality' stage. This stage produces an 'Act' that becomes a 'Fact' for the second 'New Reality' stage. The second stage produces an 'Act' that becomes a 'Fact' for the third 'New Reality' stage. The third stage produces an 'Act' that loops back to the top 'Need' box, completing the cycle.

```

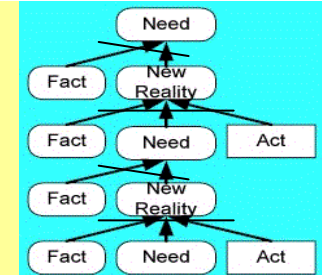
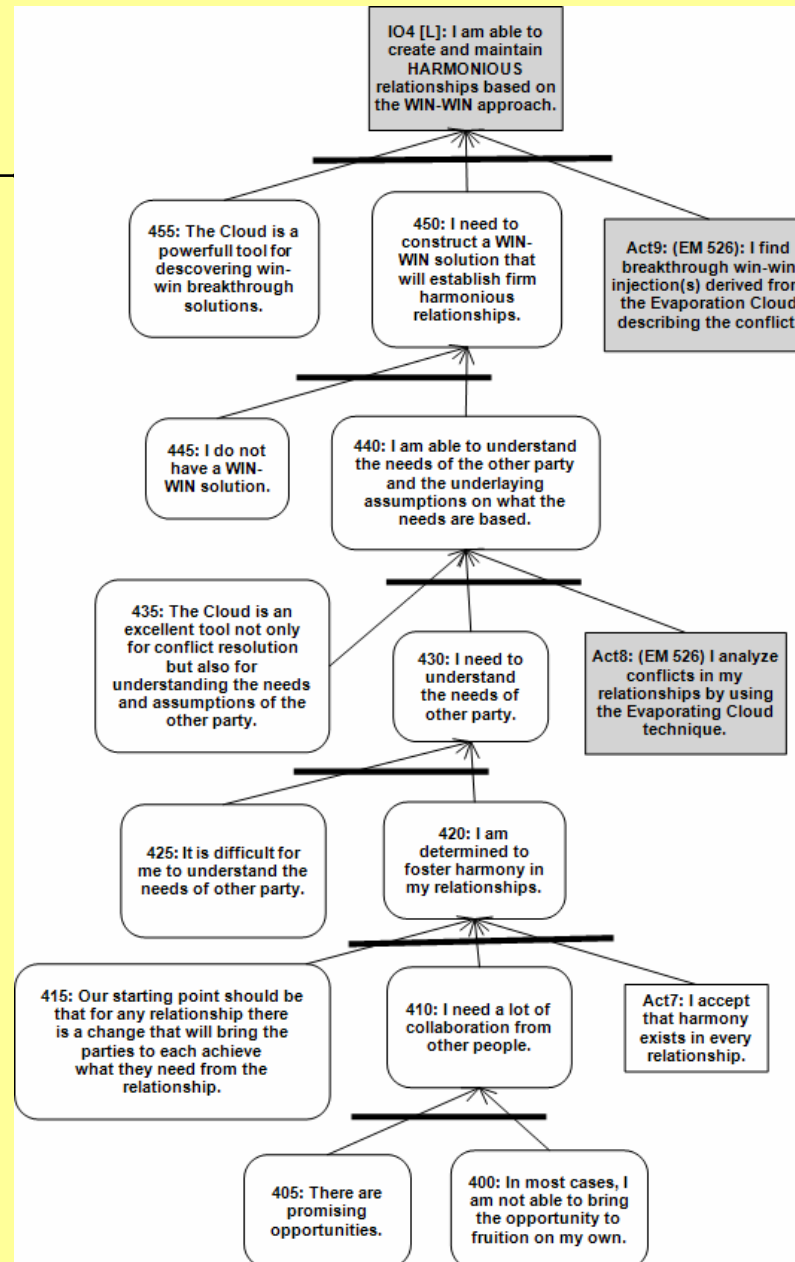
graph TD
    Need1[Need] --> NR1[New Reality]
    Fact1[Fact] --> NR1
    NR1 --> Act1[Act]
    Act1 --> Fact2[Fact]
    Fact2 --> NR2[New Reality]
    NR2 --> Act2[Act]
    Act2 --> Fact3[Fact]
    Fact3 --> NR3[New Reality]
    NR3 --> Act3[Act]
    Act3 --> Need1
  
```



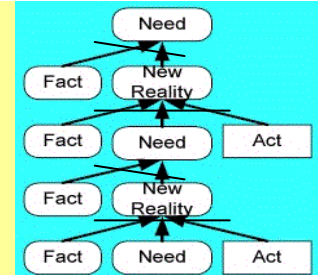
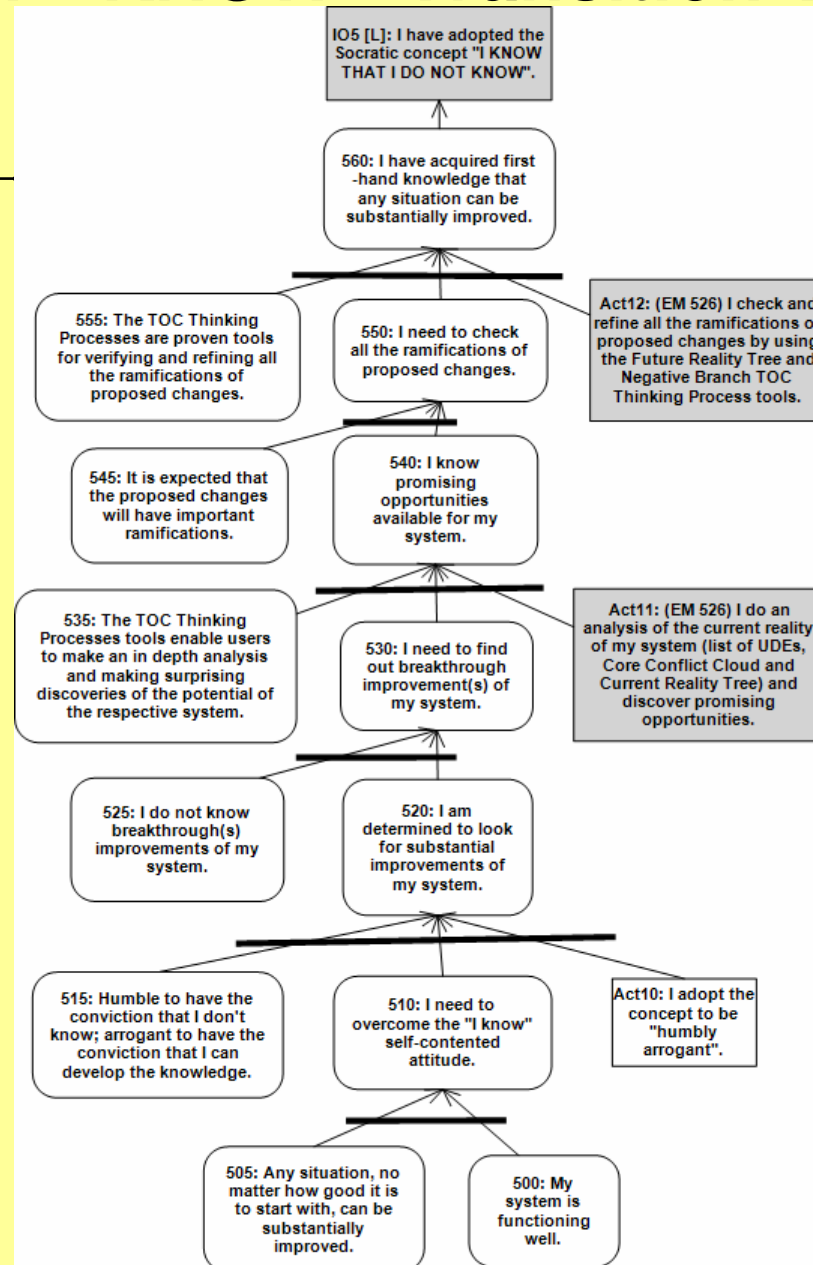
INHERENT SIMPLICITY – Transition Tree #2



HARMONY – Transition Tree #3



NEVER SAY I KNOW - Transition Tree #4



TAUTOLOGIES - Transition Tree #5

