

ENABLING STUDENTS TO TAKE RESPONSIBILITY FOR DOING HOMEWORK

My students would not do their homework. I used the TOC tools to help them think about what happens if they don't study and get bad grades. First we used a cloud to understand the problem. The students then came up with their own solution to get study strategies that are easy to use and also to get back up support from their families. We then used the ambitious target tree to think through all the student's obstacles to doing homework in order to develop the strategies they needed. The bar graph following the example depicts the results.

Assumption B-D:

- Studying is one of my responsibilities.
- Getting good grades is not impossible.
- By studying I can verify the evolution of learning.
- I'll be able to get a job.
- It will make me responsible.
- It is my job to study.



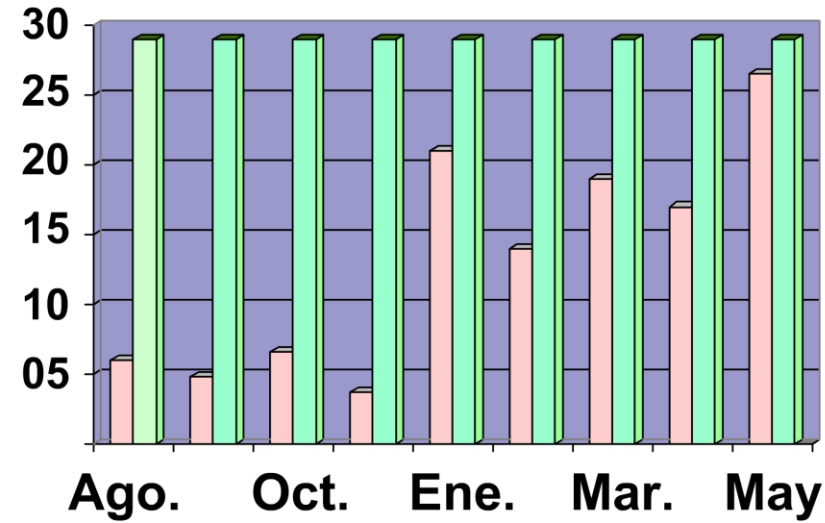
Assumption C-D':

- We want to watch t.v. for a very long time.
- We like to get everything with no effort.
- Family doesn't support us.
- We have no study habits.
- Our parents let us do that.

Solution: Get study strategies that are easy to do and get back up at home.

<i>Ambitious Target: We do our homework.</i>	
<i>Obstacles</i>	<i>Intermediate Objectives</i>
1. We have no material.	1. We have the material.
2. Not in the mood.	2. We are motivated to do homework.
3. I want to go outside.	3. Give priority to homework.
4. Watch too much t.v.	4. Organize our time.
5. Take long naps.	5. Sleep better at night.
6. Visiting family too often.	6. Visit family on weekends.
7. Letting bad friends affect your attitude.	7. Ignore bad friends.
8. Don't get help at school in doing H.W.	8. Find out what is for homework.
9. Don't follow instructions.	9. Follow instructions.
10. Talk too much in class.	10. Try not to talk in class.
11. Stop doing the homework.	11. Make the homework top priority.
12. No time to do homework.	12. Organize our time well.
13. Don't pay attention.	13. Listen to the teacher in class.
14. Have other things interested in	14. Get interested in the homework.
15. Can't count on parent's support.	15. We have a family that supports us.

Increase in the bringing of homework



General grade improvment

